



**SKIPPER**  
Limited



# TAKING POWER PLACES

TRANSMISSION TOWERS

- » Angles
- » Fasteners
- » Accessories
- » EPC Line Construction
- » Tower Load Testing





**Skipper Ltd. is a  
300 million USD**

company and the  
flagship entity of  
the S K Bansal Group

Among the **largest tower  
manufacturers**  
in the **world**

From being a leading tower  
manufacturer, we have  
**evolved our value chain**  
to produce fasteners, bolts, nuts and  
other accessories and integrated forward  
to also emerge as a successful EPC player  
in the tower business.

The leading manufacturer of  
**transmission towers,**  
MS & HT Angles, bolts,  
nuts and accessories  
among an exhaustive product basket

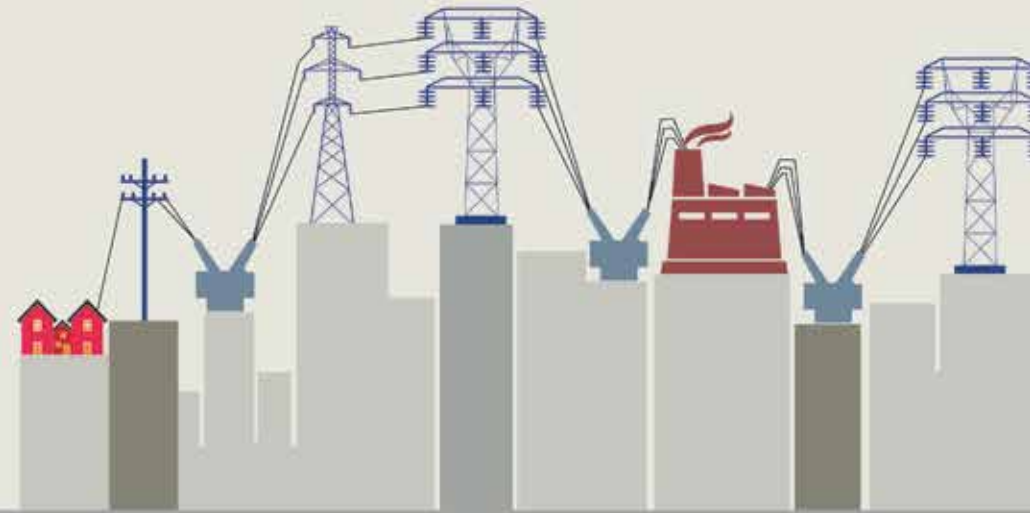


**In-House Load Testing  
and R&D Center,**  
approved by Dept. of Scientific and  
Industrial Research (DSIR), Govt. of India

Complete integrated  
**transmission**  
solutions provider



# Power-house!



## Our status:

Skipper Limited is the largest tower manufacturer in India and also among the top 10 in the world. The company exports to more than 30+ countries across the globe.



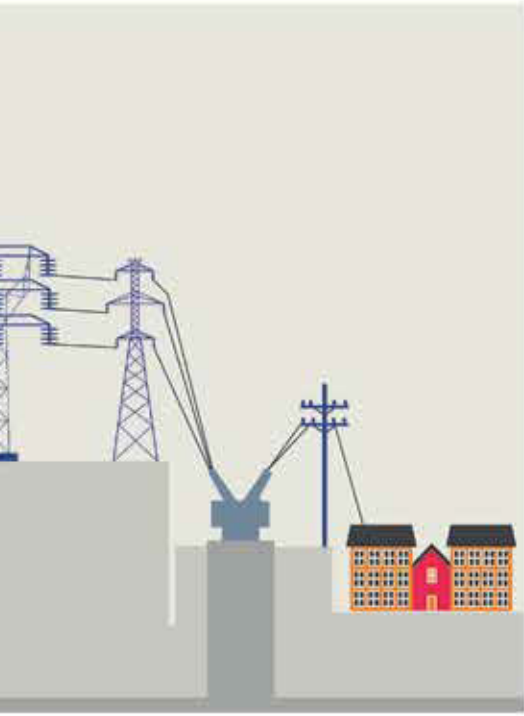
## Our background:

Skipper (established in 1981) is a flagship company of the S.K. Bansal Group. It has over 35 years of experience in manufacturing various value-added Steel products such as Telecom Towers, Hamilton Poles, Tubular Poles, ERW Tubes and Scaffoldings.

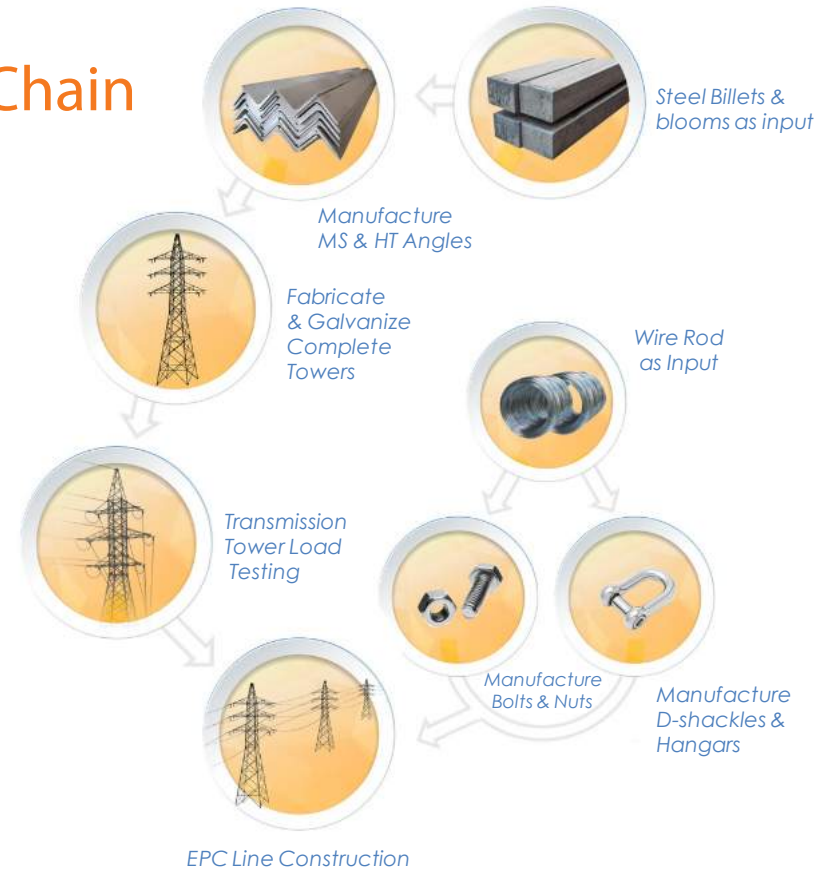


## Our quality:

Skipper's commitment towards product quality has made it the manufacturing partner of choice to the Powergrid - world's largest transmission utility and also Ramboll - world's largest tower design company (ISO 9001 certified)



## Our Value - Chain



# Consider us.

Do you prefer a multi-faceted, versatile and energetic company or one that prefers less of action?



### Our plants:

Skipper has state-of-the-art Engineering, Fabrication and Galvanizing facilities in-house, within the Company's 4 Powergrid approved plants - 2 in Uluberia, 1 in Junglepore (West Bengal) and 1 in Guwahati (Assam).



### Our EPC business:

A dedicated vertical for (EPC) services has been established with specialized skill set to execute turnkey projects in the towers' domestic market.



### Our health and safety measures:

Health and safety is one of the priority areas at Skipper. We are ISO 14001 and OHSAS 18001 certified.



### Our In-house Tower Load Testing Station

Skipper has the largest Tower & Monopole Load Testing Station in India. The facility is designed to test all kinds of lattice towers, monopoles & guyed towers with world class technical parameters.

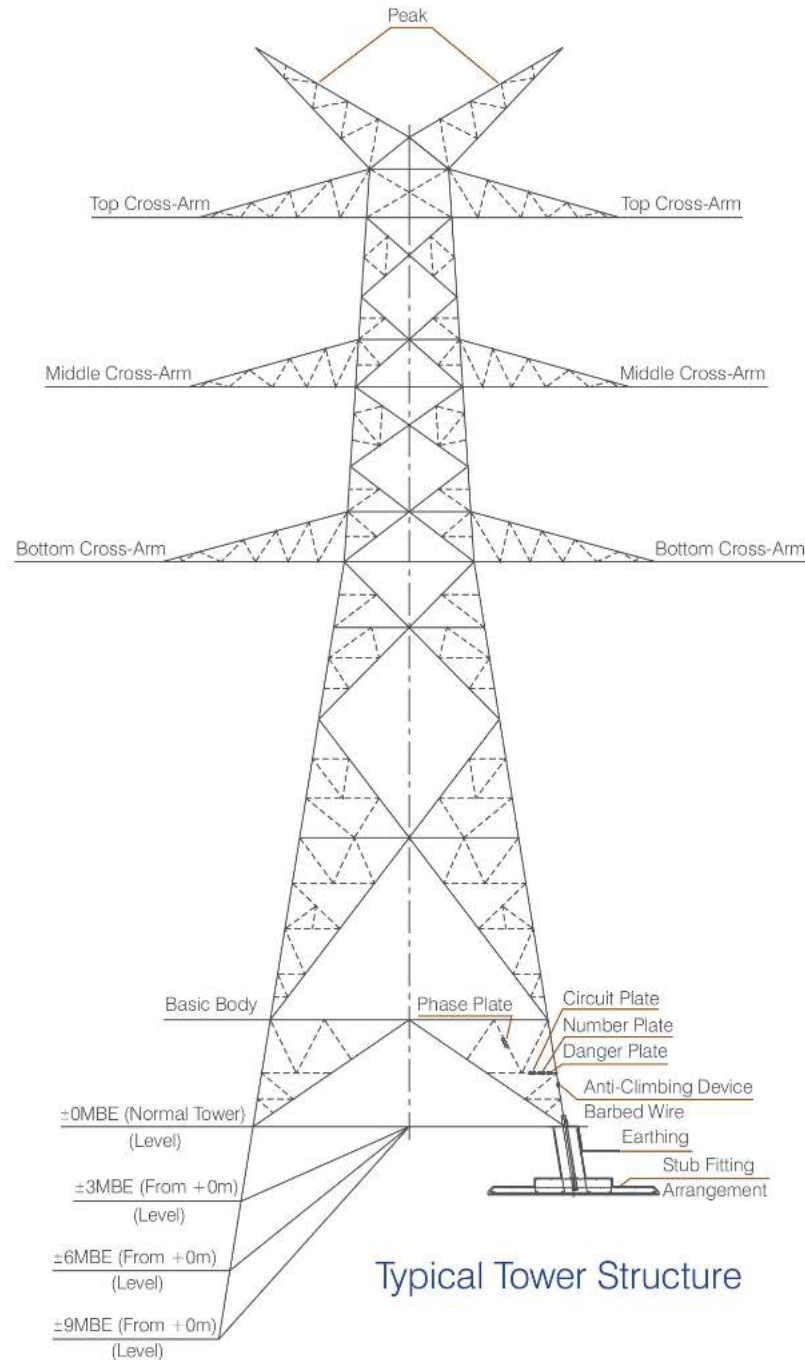
# Power-packed!

---

Would you rather join hands with a company that is credited for being singularly pioneering or those that are run-of-the-mill?

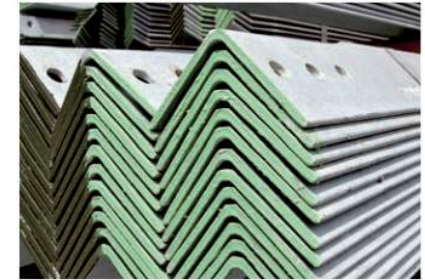
# Consider us.

At Skipper Limited, transmission towers are viewed not just as a product, but as a service. From designing and manufacturing of each component and prototyping and tower load testing to the erection and stringing of a customised tower, Skipper is present along the entire value in.



## Did you know?

Within each transmission line, there are 15-20 structures including basic bodies, extensions and stubbs.



Each structure can have upto 800 unique parts, all of which are produced, assembled for proto checking and packed perfectly before shipping from Skipper.



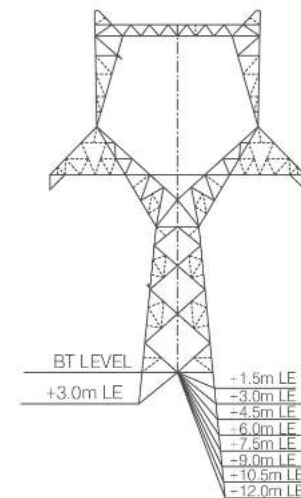
400kV DC Twin TL - Panchkula - Patiala



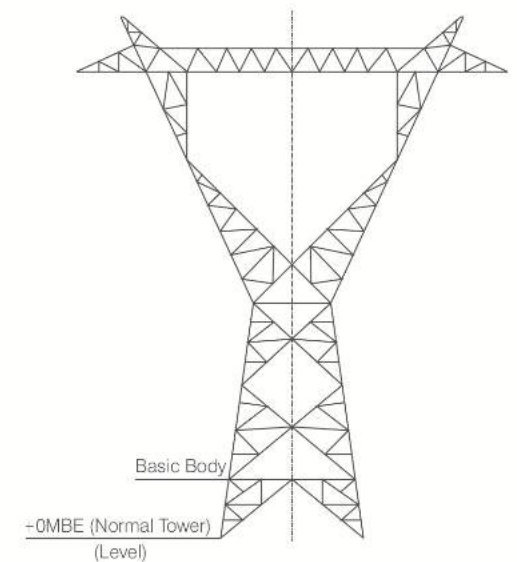


Range of towers:

Do you prefer a company that is highly specialized in its response to each and every order/ customer, or a company that treats all orders in a similar vein?



500 kV S/C TOWER

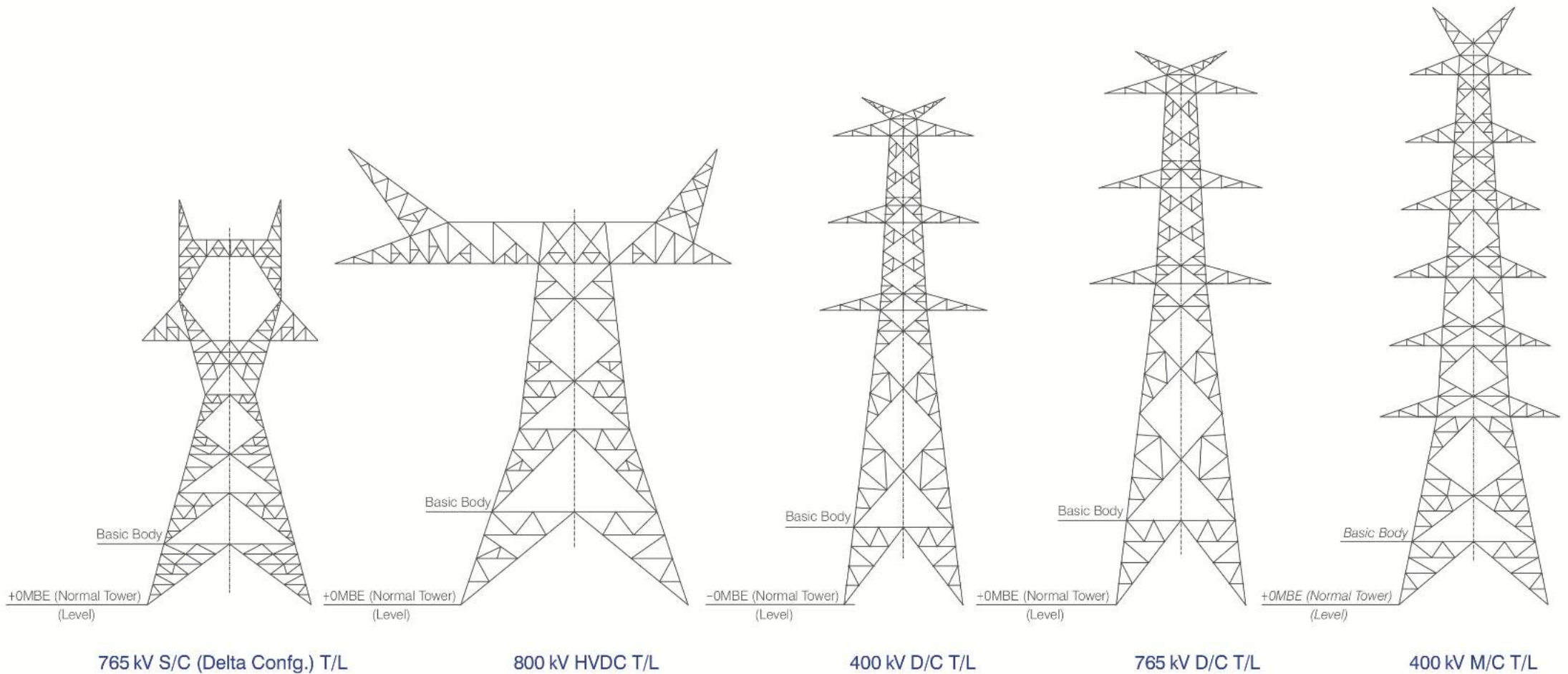


765 kV S/C (Hor. Config.) T/L



# Consider us.

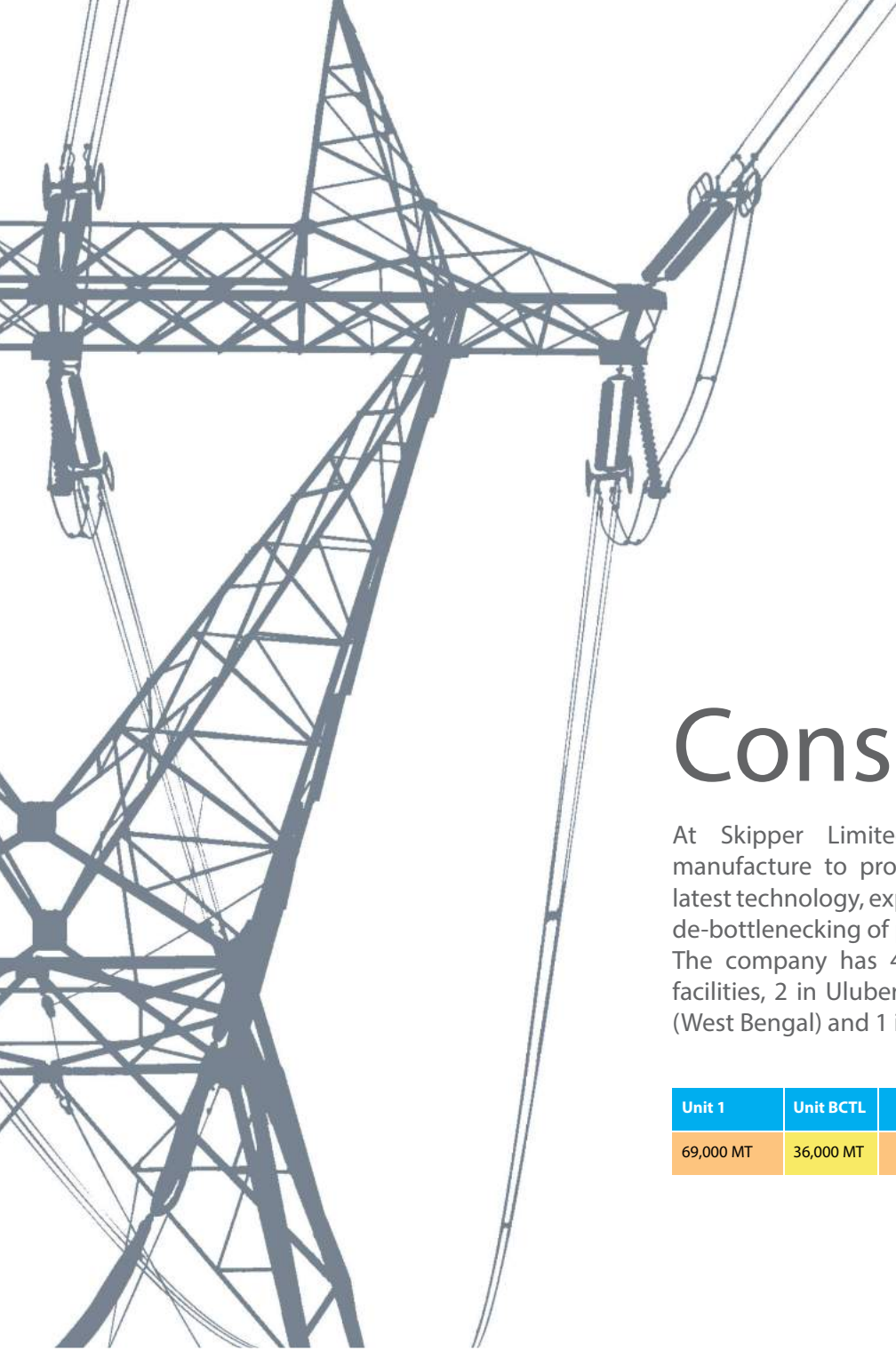
At Skipper Limited, we offer our customers a full-range-cum-diverse product basket ranging from 66kV to 800kV Towers (Single Circuit, Double Circuit, Multi-Circuit Towers suitable for Twin, Quad and Hex Conductor configurations). Some typical tower configurations produced at Skipper are shown below:





# Em-powered!

Would you rather select a company that is engaged in critical manufacture of its products or one that manufactures without thought?



## Facility highlights at Skipper

- » Owns 4 Powergrid approved manufacturing plants
- » Installed capacity of over 3,00,000 MT per annum
- » 7 in-house galvanizing plants upto 12 m length, 2.5 m width and 3 m depth
- » 57 Angle and Plate CNC lines
- » Zero machine downtime with 4 units back-up
- » In-House Tower Load Testing Station
- » Nut bolt capacity of 600 MT per month i.e. 7200 MT per year
- » In-house MS & HT Angle Rolling (upto 200 X 200 X 25) that guarantee all time availability
- » Machinery and latest technology of manufacture is imported from Italy and China
- » In-house Engineering and Drawing department to provide Optimized Design solutions for all client requirements

# Consider us.

At Skipper Limited, we extend beyond mere manufacture to providing a service. Absorbing the latest technology, expansions and modernizations and de-bottlenecking of plants on an ongoing basis. The company has 4 state-of-the-art manufacturing facilities, 2 in Uluberia, 1 in Junglepore, near Kolkata (West Bengal) and 1 in Guwahati ( Assam).

Unit 1	Unit BCTL	Unit Uluberia	Unit Guwahati	Total capacity per annum
69,000 MT	36,000 MT	1,65,000 MT	30,000 MT	3,00,000 MT

### Did you know?

Skipper has a much higher output almost by 15% per month than competitors.

The company has a fully automated ERP system for constant monitoring of its product batches.



# Out-power!

Would you rather partner with a company that takes care of a product from inception to delivery or one that simply produces and forgets?

## Consider us.

### Design and Engineering

Skipper has a state of art in-house design facility with a strong team of Design Engineers and Draughtsmen who continuously develop innovative, construction friendly and cost effective designs. The company is equipped with the latest softwares like PLS Tower, PLS Pole, Tower- Cad & Auto-CAD is equipped to provide computerized engineering solutions, 3D analysis and design. The company has also designed various type of towers ranging from 33 kv to 500

kV HVDC and various types of monopoles. Major achievements include the designing and testing of 500 KV S/C and D/C towers for South American client Tower designed and tested successfully are:

- » **Nigeria** - 132 kV D/C towers
- » **Chile** - 500 kV, 220 KV D/C towers
- » **Peru** - 500 kV S/C, 500 KV D/C towers
- » **Spain** - 750 kV S/C Portal suspension tower



In house Tower Load Testing Station



## Packing and Containerization

At Skipper, containerization is the manifestation of the company's ethos to care till the last mile for its valuable customers. Utmost care is taken to ensure all tower parts reach the end customer in sturdy sea-worthy packing for ease of handling during transportation from factory to installation site. All our plants are geared up to do single-tower bundling and factory-stuffing of containers for ensuring safe delivery to site.

Proper lashing, chocking and fumigation are done to ensure international norms of packaging. Services of professional logistic enables best of shipping lines and fast delivery to our international customers. A dedicated fleet of transporters are engaged for transportation of towers to our domestic customers.



# Over-power!

Would you prefer multiple companies to get your job done or a one-stop partner who provides you a turnkey solution?

## Consider us.

At Skipper, motto is to be a leader in the Transmission Lines business and provide a one – stop solution to its brand-enhancing customers. A dedicated vertical of company has been established for EPC line construction with a specialized skill set to execute turnkey Transmission projects up to 800 kV





## Project Management & Execution

After achieving leadership and manufacturing excellence in Towers, Fasteners and its accessories, the company is currently involved in inculcating superior project management and execution expertise in its EPC business for clients and provide value-added turnkey solutions.

## Resources

A perfect blend of critical key resources—people, equipments and a competitive network of service providers has enabled the Company to establish itself in the market.

**People:** The Company has a highly experienced and capable team of project management and project execution. It comprises project managers, surveyors, field engineers and skilled technicians. They are well experienced in their respective fields and well-versed, both with the conventional as well as advanced methods, of project execution.

**Equipments:** The Company possesses sophisticated tension-stringing machines, winches and other heavy duty construction equipments which give it a distinct edge to complete projects within a stringent time-frame.



**Network of service providers:** The Company has a well established and strong network of service providers in India. It deploys the latest equipment to



## OUR ONGOING EPC TRANSMISSION LINE PROJECTS

SL NO	PROJECT DETAILS	CLIENT	LENGTH (KM)
1	400 KV D/C (QUAD) JIGMELING - ALIPURDUJAR TRANSMISSION LINE (ASSAM PORTION) (JV WITH C&C CONSTRUCTIONS LTD.)	PGCIL	110
2	220 KV / 132 KV DC / SC LINES AGAINST PACKAGE -2 OF TENDER SPECS. TD 400/15 (JV WITH SONAA ENGINEERING PVT LTD.)	UPPTCL	122.56
3	132 KV D/C CHATTARGARH - LOONKARANSAR TRANSMISSION LINE	RRVPLN	77
4	220 KV D/C AKAL - JAISALMER 2 TRANSMISSION LINE	RRVPLN	75
5	220 KV & 132 KV TRANSMISSION LINES IN KAITHAL AREA (JV WITH SOLUX GALFAB PVT LTD)	HVPNL	80.2
6	220 KV D/C PALAMPUR - HAMIRPUR TRANSMISSION LINE	HPPTCL	57
7	Construction of LILO of one circuit of 400KV D/C Akal - Jodhpur (New) (Quad Moose) Line at Jaisalmer-2.	RRVPLN	10
8	Re-Alignment work of 400KV D/C Multi Circuit Transmission Line in Yelahanka Presidency University for PGCIL	PGCIL	0.6
9	Supply, Erection, Civil, Testing and commissioning of equipment for construction of 220KV and 66KV Transmission Lines (Against Risk purchase) on Turnkey basis REC 248	HVPNL	139
10	Supply, Erection, Civil, Testing and commissioning of equipment for construction of 765KV HEXA ZEBRA Conductor Transmission Line from Fatehgarh (II) - Bhadla (II) for PGCIL under TBCB package	PGCIL	189.5
11	25KV Railway Electrification work in between Luckeesarai to Sadipur section.	IRCON	77
12	25KV Railway Electrification work at Kushmunda Siding near Gevra Road station.	South Eastern Coalfields Limited	27
13	25KV Railway Electrification work in between Satna - Rewa section.	West Central Railway	50

## OUR COMPLETED EPC TRANSMISSION LINE PROJECTS

SL NO	PROJECT DETAILS	CLIENT	LENGTH (KM)
1	± 800 KV HVDC RAIGARH - PUGALUR TRANSMISSION LINE (PACKAGE 09) (JV WITH UNITECH POWER TRANSMISSION LTD.)	PGCIL	180
2	400 KV D/C (TWIN) PANCHKULA - PATIALA TRANSMISSION LINE (JV WITH RANJIT SINGH & COMPANY)	PGCIL	65.440
3	400 KV D/C (QUAD) BHADLA - BIKANER TRANSMISSION LINE (JV WITH UNITECH POWER TRANSMISSION LTD.)	RRVPLN	189.913
4	400 KV D/C (TWIN) ALLAHABAD - KANPUR TRANSMISSION LINE (PART I) (JV WITH RANJIT SINGH & COMPANY)	PGCIL	146.363
5	400 KV D/C (TWIN) RAPP 7 & 8 - KOTA TRANSMISSION LINE	PGCIL	45.233
6	220 KV / 132 KV DC / SC LINES AGAINST PACKAGE -2 OF TENDER SPECS. TD 400/15 (JV WITH SONAA ENGINEERING PVT LTD.)	UPPTCL	429.19
7	220 KV / 132 KV DC / SC LINES AGAINST PACKAGE -3 OF TENDER SPECS. TD 400/15 (JV WITH SONAA ENGINEERING PVT LTD.)	UPPTCL	359.195
8	Supply, Civil, Erection, Testing and commissioning work of the equipment for construction of 220KV Height extension work of existing 220KV Transmission Line by 220KV MONOPOLE for DMRC.	DMRC	02 Nos Monopole
9	TW-04 ISLAMPUR - SAHARSA PORTION OF ± 800 KV HVDC BISHWANATH CHARALI - AGRA	PGCIL / INABENSA	(PARTIAL WORK)
10	TW-07 GORAKPUR - GOMTI RIVER PORTION OF ± 800 KV HVDC BISHWANATH CHARALI - AGRA	PGCIL / INABENSA	(PARTIAL WORK)

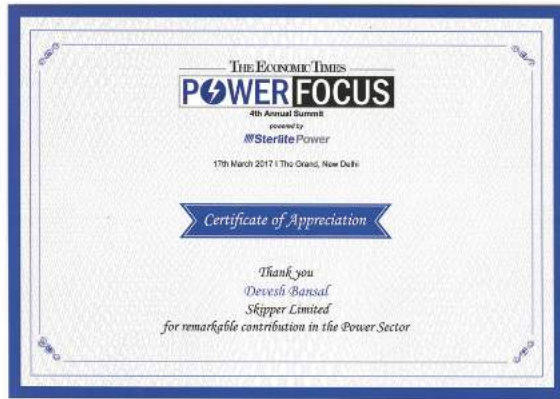
# Power-led!

Would you rather select a company that is quality-conscious by default or one that views quality control merely as an ISO mandate?



epc player award

## Quality Awards



"Largest Tower Supplier" award by PGCIL in Tower supply category for the 3rd consecutive year

# Consider us.

At Skipper Limited, quality is a way of life. We test and certify all that we manufacture so that our customers can be completely assured in the knowledge that they are being delivered the most genuine product.



# Registration & Approvals

- › Bureau of Indian Standards (ISI)
- › ISO 9001, ISO 14001, ISO 18001
- › Power Grid Corporation of India Limited (PGCIL)
- › Egyptian Electricity Transmission Company (EETC)
- › Bhutan Power Corporation
- › Major State Electricity Boards of India (SEBs)
- › Budcentral-Certificate of Conformity
- › Kenya Transmission Company (KETRACO)
- › Transmission Company of Nigeria (TCN)
- › National Grid Corporation of Philippines (NGCP)
- › Canadian Welding Bureau (CWB)
- › CE (Europe)

- › Ministry of Railways (RDSO)
- › Damodar Valley Corporation
- › Transmission Corporation of Andhra Pradesh Limited (APTRANSCO)
- › Odisha Power Transmission Corporation Limited (OPTCL)
- › The Karnataka Power Transmission Corporation Limited (KPTCL)
- › Saudi Electric Company
- › The Jordanian Electric Power Company Ltd.,
- › RETIE, Colombia
- › UKSEPRO
- › LAPEM
- › ACHILLES
- › SIRIM QAS, CE & CIDB

	Indian Standard	International Standard
Rolling & Cutting tolerances ( Hot Rolled Steel Products)	IS 1852	
Fabrication	IS 802	IEC 60826
Mild Steel (Tower Material)	IS 2062:2011 (E250A)	BSEN 10025-1&2 (S275JR/J0), BSEN 10056-1&2 ASTM A36/A36M
High Tensile Steel (Tower Material)	IS2062:2011 (E350A)	BSEN 10025-1&2 (S355JR/J0), BSEN 10056-1&2 ASTM A572 Gr 50
Galvanizing	IS 2629, IS 2633, IS 4759	BS 729, BSEN ISO1461, ASTM A123, ASTM A153
Fasteners (Grades 5.6/5 & 8.8/8)	IS 1367 (Part-3&6), is 12427, IS 14394, is 10238	BS 4190, ASTM A394, ASTM 563, DIN 555, DIN 7990, DIN 931, DIN 933, DIN 7990

The collage displays several key documents for Skipper Limited:

- Achilles Certificate of Registration:** Issued to Skipper Limited, covering the manufacturing of towers and components for transmission lines.
- Utilities Marked & Central Europe:** A certification mark for products used in utility and power sectors.
- Angelique International Limited:** A document certifying the company's compliance with ISO 9001:2015 requirements for its manufacturing processes.
- ISO 9001:2015 Certificate:** Issued by LMS Assessments, certifying the company's quality management system.
- CWB Letter of Validation:** Issued by the Canadian Welding Bureau, validating the company's SMAW welding process for Canadian markets.
- CE Marking:** Evidence of compliance with European Union standards.
- Other Certifications:** Includes documents from organizations like SIRIM QAS and various international standards bodies.



Would you rather partner with a company which has repeatedly won the trust of every single customer or one that looks for short-term gains?

Consider **us**.

At Skipper Limited, we believe that the customer's project is OUR project and we are always ready to go the extra-mile to ensure we become the partner of choice to every buyer. Our customers and partner endorsements speak for themselves.



"Over the past six years, Skipper has supplied 400 KV and 765 KV Transmission Towers to 7 of EMC's transmission projects. Their quality and commitment is quite good and we wish to take them as our preferred supplier in future also." -RK Shah, President, EMC Ltd.

### Ranjit Singh & Co.

"We are happy to have Skipper as a JV partner in 4 major Transmission Projects. Their product quality is excellent and their approach is highly professional and ethical." -BS Gill, Managing Partner, Ranjit Singh & Co.



"Skipper is one of our most dependable Tower partners and we look forward to our association growing from strength to strength." -SC Jha – SBU Head & VP, Tata Projects Ltd.



"Congratulations Skipper for successfully executing supplies for the difficult Multi-Circuit Towers (average tower weight more than 60 MT) to our Gaya-Kodarma T/L Project. We've found Skipper to be a reliable and quality-conscious manufacturer and look forward to working with them again." -Santosh Thakur, Director – Shyama Power India Ltd.



"Skipper has been a Ramboll manufacturing partner for more than 6 years and we have found them to be a fair and transparent Organization. We wish them all the best in their future endeavours." -Trond M. Bredesen, COO – Ramboll Towers India & Global Production Director



# Man-power!

Would you rather select a company that has resident intellectual capital or one that outsources most of its research and knowledge requirements to independent consultants?



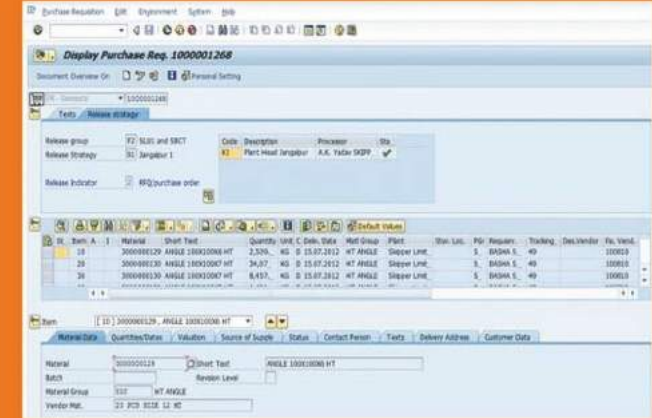


# Consider us.

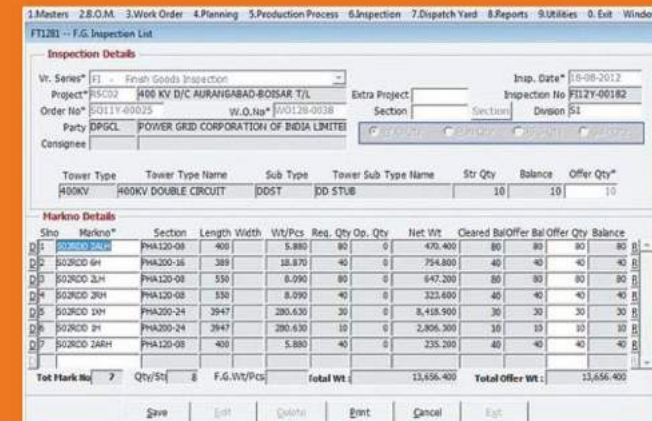
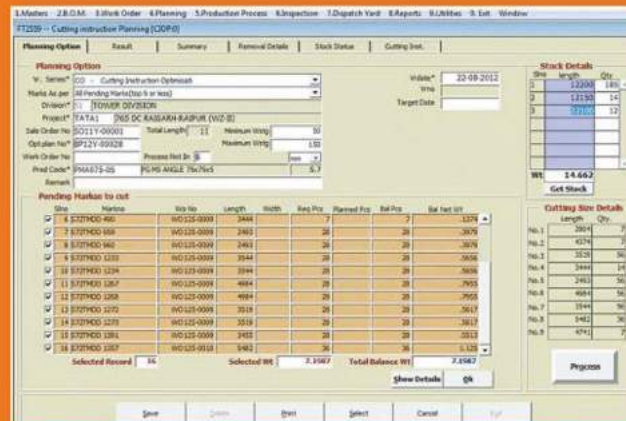
At Skipper Limited, resident intellectual capital is the main driving force. Automated systems, integrated IT platforms and the access to real-time data enables smooth and seamless processes and delivery schedules. We run SAP across our company and also have a focused ERP for Tower production – Lighthouse.

The company has four state-of-the-art PGCL – approved plants in Junglepore and Uluberia on NH-6 Kolkata, West Bengal, India.

## SAP SCREENSHOT



## LIGHTHOUSE SCREENSHOT





# Barcoding System

Skipper has introduced barcoding facility for tower supply for the first time in India . Our ultimate goal is to minimize the pain points of customer pertaining to material management and planning at all locations, which ensures 100% receipt of materials as delivered. Key features of barcoding system have been listed below:

## Key Features:

- » Real time information sharing on materials supplied
- » Consolidated information sharing on materials supplied
- » Easy access to information pertaining to materials supplied
- » On line information sharing
- » No hardware or software requirement at site
- » Hassle free joint verification can be carried out

## Benefits to customers:

- » Ensuring "Zero shortage" of materials supplied and received at site
- » Hassel free joint verification can be carried out
- » Efficient materials management (sorting, bundling and storage) at site.
- » Minimal time required as compared to physical joint verification
- » Ensuring efficient material handling and tracking from delivery to erection of towers.



Bundles barcode



Boxes barcode



Boxes barcode

# Other Products

## Monopole



A pioneer, Skipper Limited is the largest Monopole designing and manufacturing facility in India, armed with global expertise and intellectual capital. It has an application of upto 400 kV in Transmission Towers and for heights of up to 40 metres for Telecom Towers.

## Telecom Towers



Skipper has state of the art facility for production of all types of ground based telecom towers and monopoles. With the advent of newer technologies skipper is also currently supplying various kinds of camouflaged towers which are basically monopoles made to look like palm tree, pine tree etc. We are already supplying tubular/Angular/Hybrid towers to various clients.

## Poles



Skipper's strength as a pole manufacturer and distributor ensures that its products find use in Power Transmission, Distribution and Lighting projects across India as well as in Gulf and African countries. Products manufactured include Tubular Swaged Poles, High Mast Poles, Octagonal Poles and Monopoles. The durability and quality of Skipper poles ensure reliability, durability, and ease of installation.

## Railway Electrification



The company is gearing up to sharpen its focus on Railway electrification and intends to increasingly start bidding for such projects in strategic alliance with local private players initially. The company is in the process of adding more manpower and building capacities to handle all future railways related projects.





**Registered Office:**

**Skipper Limited** 3A, Loudon Street, 1st Floor, Kolkata - 700 017, India

Ph: +91 33 2289 5731 / 32 | Fax: +91 33 2289 5733 | [towers@skipperlimited.com](mailto:towers@skipperlimited.com) | [www.skipperlimited.com](http://www.skipperlimited.com)