

An ISO 9001  
Certified Company

# SKIPPER

## PIPES

SKIPPER

SKIPPER 80MM (3") GOLD COLUMN PIPE (17.0 kgf/cm<sup>2</sup>)

SKIPPER

SKIPPER 80MM (3") GOLD COLUMN PIPE (17.0 kgf/cm<sup>2</sup>)

SKIPPER

# COLUMN PIPES



# SKIPPER

## PIPES

### COLUMN PIPES

Skipper Column Pipes are manufactured in the range of 25mm to 100mm diameter with different pressure ratings.

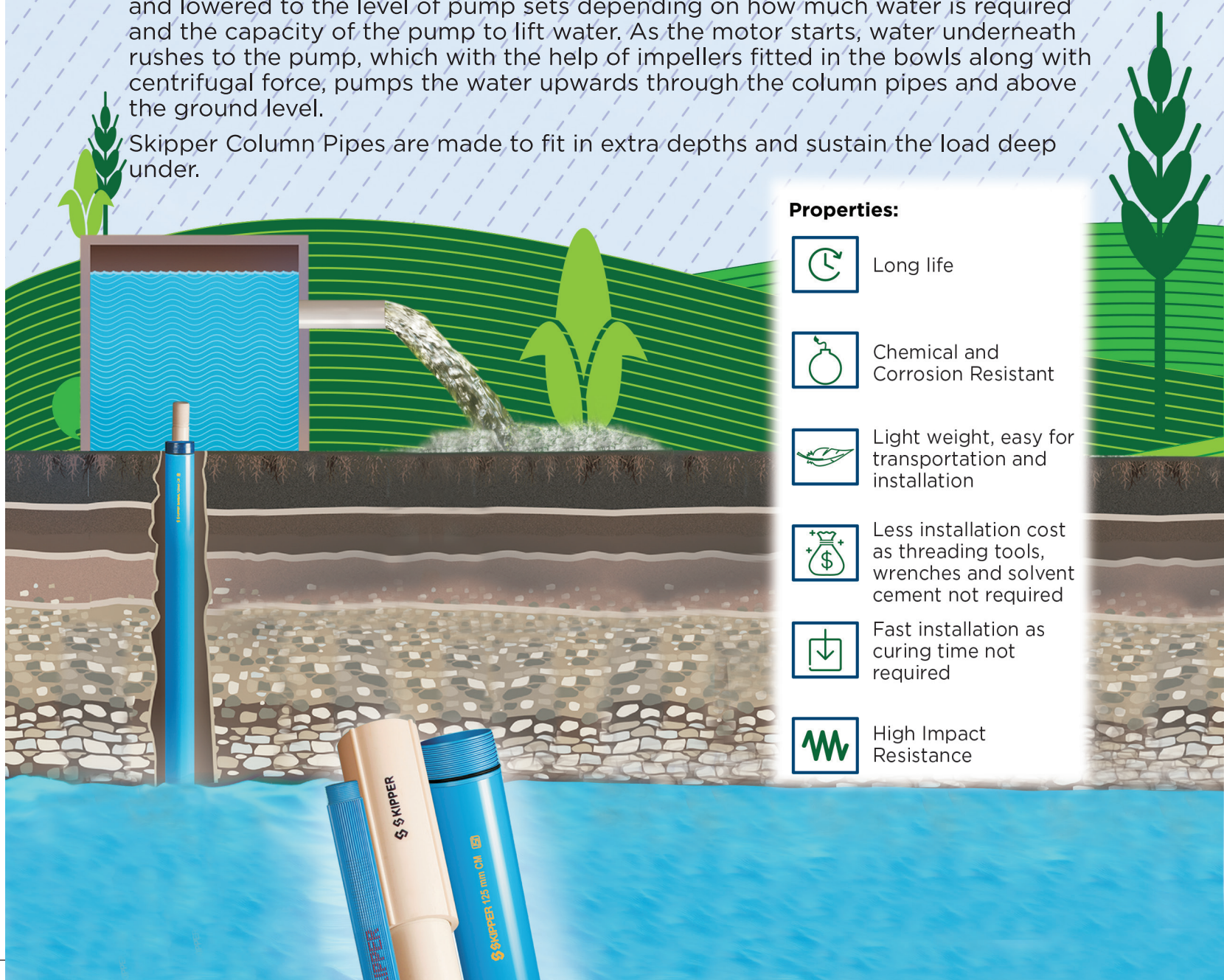
These pipes are used to raise or drop submersible pumps up to a depth of 1000 feet. Column pipes are designed to withstand the load of pump, water and pipes. Uniquely designed Square Threads, EPDM rubber sealing ring and special adhesive at pipe joints withstand considerable shocks and jerks during operation.

The **Skipper Column Pipe** range consist of:

- **V 4 (Screen - Orange)**
- **Medium (Screen - Black)**
- **Gold (Screen - Blue)**
- **Silver (Screen - Red)**
- **Diamond (Screen - Green)**
- **Super Heavy (Screen - Yellow)**

Borewells and submersible pumps require column pipes through which water is pumped out from the underground sources. These pipes are fitted to the pumps and lowered to the level of pump sets depending on how much water is required and the capacity of the pump to lift water. As the motor starts, water underneath rushes to the pump, which with the help of impellers fitted in the bowls along with centrifugal force, pumps the water upwards through the column pipes and above the ground level.

Skipper Column Pipes are made to fit in extra depths and sustain the load deep under.



#### Properties:



Long life



Chemical and Corrosion Resistant



Light weight, easy for transportation and installation



Less installation cost as threading tools, wrenches and solvent cement not required



Fast installation as curing time not required



High Impact Resistance

TECHNICAL DATA SHEET OF SKIPPER COLUMN PIPES										
SL No	PIPE TYPE	SIZE	M.O.D		WALL THICKNESS		WALL THICKNESS		Pressure Rating (kg/cm <sup>2</sup> )	Safe Pump Delivery Head in Meter
					AT MOUTH		AT MIDDLE			
			Min	Max	Min	Max	Min	Max		
1	S-12.5	25MM	33.27	33.53	3.70	3.90	1.70	1.80	16	160
2	S-15	25MM	33.27	33.53	3.75	3.95	2.00	2.10	19	190
3	SILVER	25MM	33.27	33.53	3.70	3.80	2.75	2.85	21	210
4	GOLD	25MM	33.27	33.53	3.90	4.00	2.90	3.00	29	290
5	DIAMOND	25MM	33.27	33.53	3.40	3.60	3.40	3.60	33	330
6	S-12.5	32MM	42.03	42.29	4.25	4.35	2.10	2.20	16	160
7	S-15	32MM	42.03	42.29	4.20	4.35	2.45	2.55	19	190
8	SILVER	32MM	42.03	42.29	3.90	4.00	2.90	3.00	21	210
9	GOLD	32MM	42.03	42.29	4.20	4.30	3.10	3.20	25	250
10	DIAMOND	32MM	42.03	42.29	5.25	5.35	4.30	4.40	36	360
11	S-12.5	40MM	48.11	48.41	4.80	4.90	2.30	2.40	15	150
12	SILVER	40MM	48.11	48.41	3.90	4.00	2.90	3.00	19	190
13	GOLD	40MM	48.11	48.41	4.50	4.65	3.20	3.30	23	230
14	DIAMOND	40MM	48.11	48.41	5.50	5.60	4.50	4.60	33	330
15	GOLD	50MM	60.00	60.20	5.00	5.10	3.45	3.50	19	190
16	DIAMOND	50MM	60.00	60.20	6.10	6.40	5.00	5.55	26	260
17	SP.-HEAVY	50MM	60.00	60.20	7.20	7.50	6.00	6.20	35	350
18	GOLD	65MM	75.00	75.30	5.60	5.80	4.45	4.65	18	180
19	DIAMOND	65MM	75.00	75.30	6.40	6.50	5.25	5.48	22	220
20	SP. HEAVY	65MM	75.00	75.30	8.10	8.30	6.80	7.00	35	350
21	GOLD	80MM	88.00	88.30	6.40	6.50	4.80	5.00	17	170
22	DIAMOND	80MM	88.00	88.30	7.30	7.50	5.60	6.10	22	220
23	SP. HEAVY	80MM	88.00	88.30	9.60	9.90	8.00	8.20	35	350
24	GOLD	100MM	113.00	113.30	7.50	7.60	5.80	6.10	16	160
25	DIAMOND	100MM	113.00	113.30	7.90	8.20	6.65	7.06	18	180
26	SP. HEAVY	100MM	113.00	113.30	11.70	12.00	10.20	10.40	35	350





## COLUMN PIPES

### Salient features:

- Lead and Metal free Pipes
- Light weight and easy for installation
- Not susceptible to corrosion.
- No Scaling
- Specially designed THICK AND THIN for more safety and strength for threads.
- Unique Square threads by CNC Machine for highest strength to withstand tensile load and pressure by pump action.
- Pipes and Couplers with square threads and extra strong adhesive and rubber sealing jointing.
- Hygienic EPDM sealing rings for water tight joints and to absorb pump vibrations.
- Available in both Coupler and Bell end joints in 25 mm and 32 mm.

### Applications

- Domestic and industrial applications for water rising by submersible pumps.
- Ideal for fresh water, salty water and chemically aggressive water.



### Skipper Limited

3A Loudon Street, Kolkata-700017, West Bengal, India

P: 90512 12345 • E: mail@skipperlimited.com • W: www.skipperlimited.com

• **ASSAM** (7578003201) • **DELHI** (9871008891) • **GUJARAT** (7573044588)  
• **MADHYA PRADESH** (9329557575) • **MAHARASHTRA** (7755943128)  
• **ODISHA** (9078084434) • **PUNJAB** (8968113366) • **RAJASTHAN** (9929984711/7737260697)  
• **TELANGANA** (9515124060) • **UTTAR PRADESH** (9810781944)  
• **WEST BENGAL** (9830211145)

**Works:** Ahmedabad (Gujarat) • Guwahati (Assam) • Hyderabad (Telangana)  
• Kolkata (West Bengal) • Sikandrabad (Uttar Pradesh)